

# Easy-UPS Li-ion USB Driver Installation

# Easy-UPS Li-ion USB Driver Installation

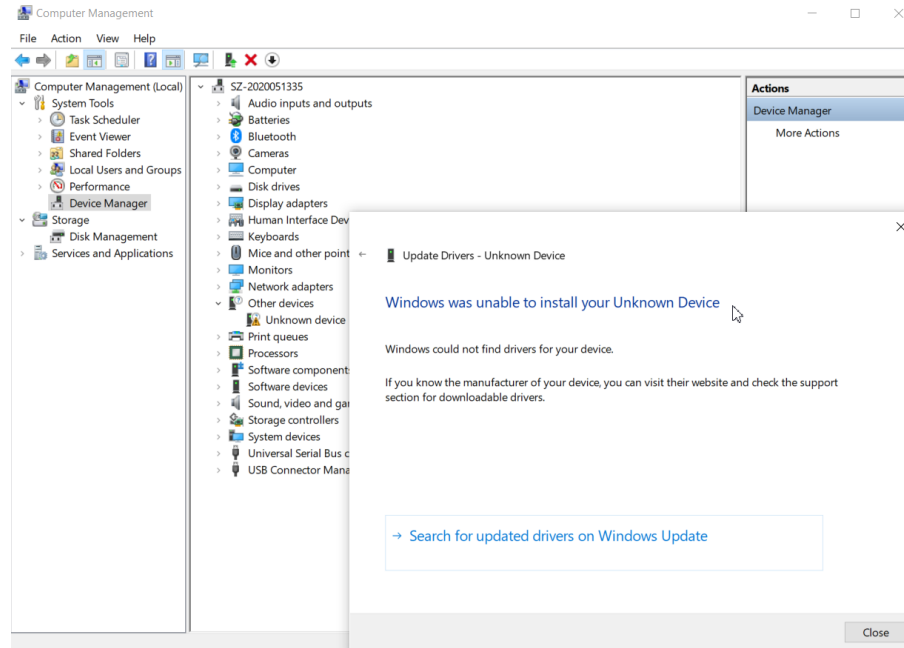
If you use the serial port to upgrade, you do not need to install the driver and ignore this section; if you use the USB port to upgrade, you need to install the USB driver software, and follow the steps below.

After the UPS is powered on, use a USB cable to connect the UPS to the PC. If it is the first time to use the PC, it will recognize the new hardware after connection, and automatically search for the device driver. After the search, a dialog box of "Device Driver Installation Failed" will be displayed, click Close. Open Device Manager from Control Panel and install the driver for that hardware.

# Easy-UPS Li-ion USB Driver Installation

## Step 1 – USB Driver not Installing Automatically

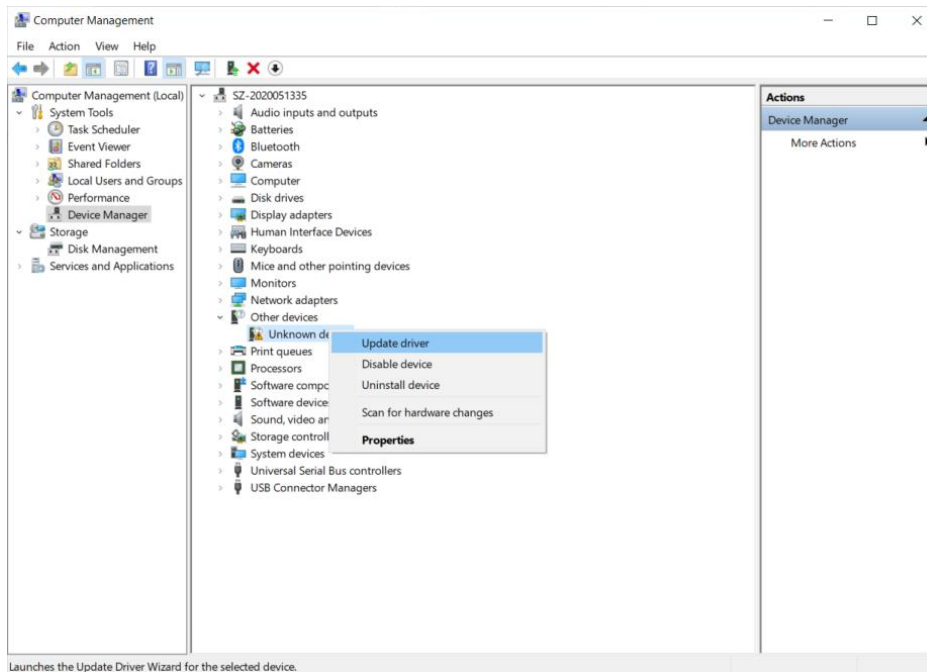
If the driver was not automatically installed, close the “**Windows was unable to install your Unknown Device**” page.



# Easy-UPS Li-ion USB Driver Installation

## Step 2 – Updating Driver in Device Manager

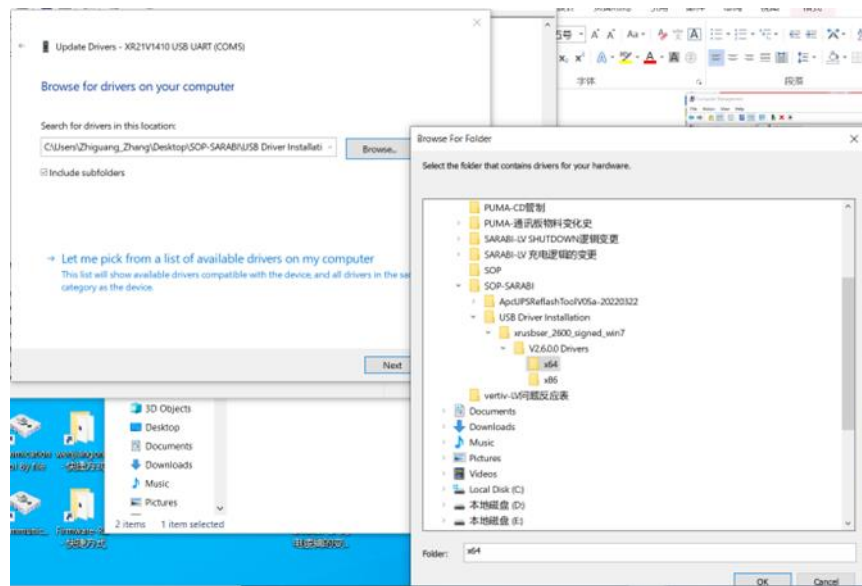
Open the **Device Manager**, select **Other devices** and right click on **Unknown device**. Then click **Update driver**.



# Easy-UPS Li-ion USB Driver Installation

## Step 3 – Selecting Driver File

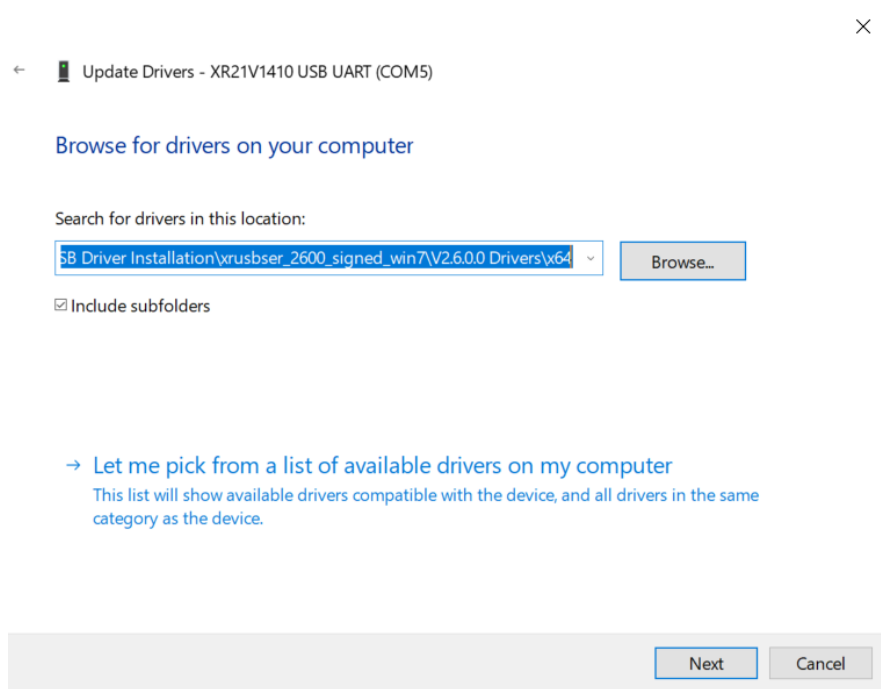
In the pop-up dialog box, select **Browse my computer for driver software**, then click **Browse** and navigate to the directory of the **USB Driver Installation** folder contained in the firmware folder. Bases on your system configuration, select the **x86 or x64 directory** (32-bit system select x86 directory, 64-bit system select x64), and click **OK**.



# Easy-UPS Li-ion USB Driver Installation

## Step 4 – Starting Driver Installation

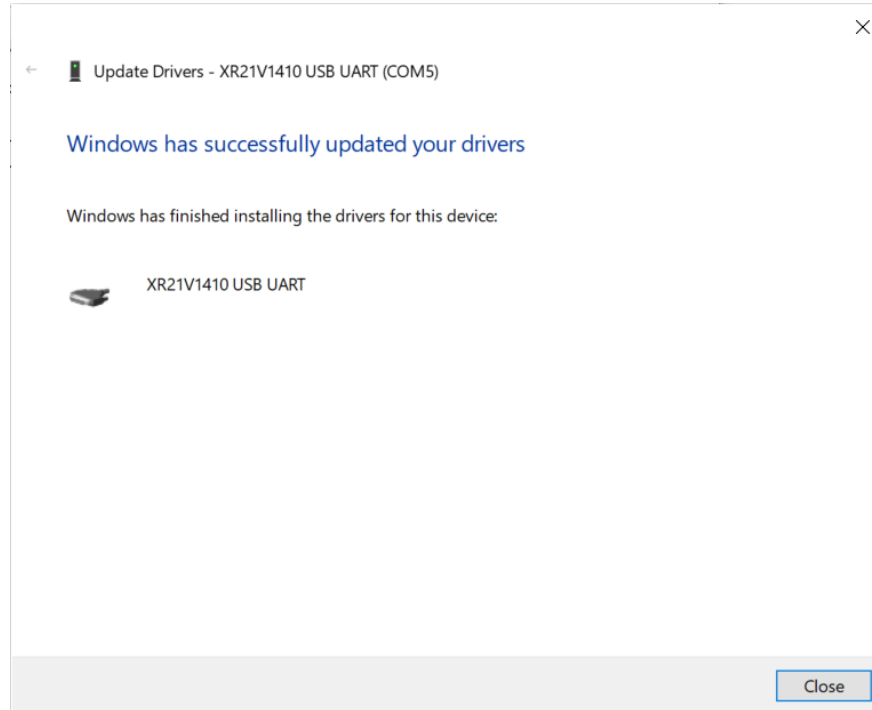
Click **Next** to start the driver installation.



# Easy-UPS Li-ion USB Driver Installation

## Step 5 – Driver Installation Complete

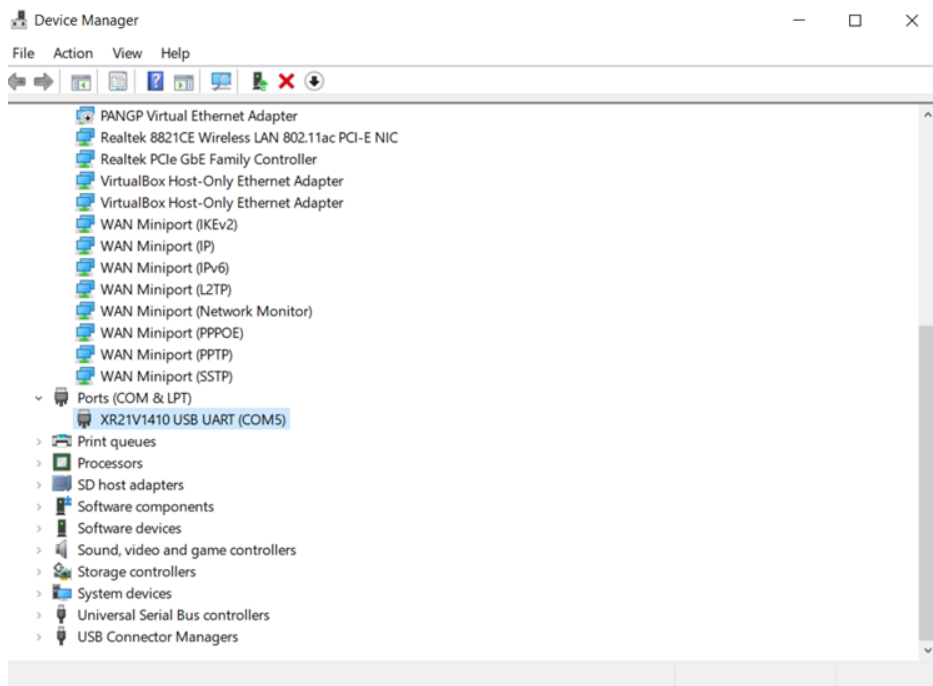
The driver installation has been completed. Click **Close**.



# Easy-UPS Li-ion USB Driver Installation

## Step 6 – Device Manager

The communication port of **XR21V140 USB UART** can be seen under the **Ports (COM and LPT)** of the Device Manager.





Life Is On

